



“Foundries & Technology in Partnership” Casting Technology New Zealand 2010 Conference and Annual General Meeting

6 – 8 August 2010

BAYVIEW WAIRAKEI RESORT, TAUPO

Partners Programme

9:50am - Gather in hotel foyer, mini bus leaves hotel at 10:00am for

Lava Glass Blowing Studio
165 State Highway 5, just 1½ kms north of the hotel

Lava Glass Blowing Studio, Gallery and Café is the latest tourist attraction to come to Taupo. Lava Glass offers a unique opportunity to view the captivating process of Glass Blowing.

In the Glass Blowing Studio, the public can view the glass blowing process by Glass artist Lynden Over. His training in glass blowing, jewellery and sculpture brings a unique quality of form to his glass work.

You can enjoy morning tea of freshly made cakes, scones and slices or pick from the other delicious choices on the menu. Sit inside on comfortable couches, or outside on the sunny patio and take in the rural surroundings.



11:30am mini bus leaves Lava Glass for **L'Arte** + lunch

L'Arté Café , Gallery and Mosaic Garden

255 Mapara Road

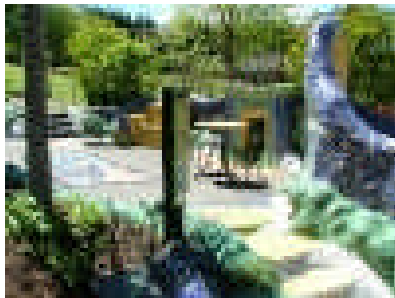
Acacia Bay

L'arte is a visual and edible feast, apart from there being mosaics everywhere (even in the loo's) the art work will have you absorbed.

Set in this wonderful arty mosaic environment you will discover the delights of L'Arte' food and enjoy the unique ambience the combination of Food and Art has created. Utilizing New Zealand's finest produce L'Arte's kitchen team prepares everything on site.

The food and art at L'Arte's unique destination are exquisite. Resident ceramic artist Judi Brennan's work is evident everywhere and is sold exclusively from L'Arte's Gallery together with work from other New Zealand artists.

The café and gallery are both set in a magical garden complete with an outside mosaic living room.



At **2pm** the mini bus will return to Hotel